

SAVIN®

8090/8110/8135

Multifunction Systems

FAST > RELIABLE > CONFIGURE > EFFICIENT > SUCCESS >



Reliable. Fast. Succeed.

Drive productivity further.

With output speeds up to 135 ppm, Savin 8090/8110/8135 Multifunction Systems are ideal for a wide range of demanding environments—from bustling workgroups and corporate reproduction centers to print-for-pay businesses. And because they're engineered for long-term reliability, you can count on their production even when timelines are tight. So you'll no longer have to outsource your work or invest in a big, costly printer to handle your high-volume production jobs.



Preview your jobs on the easy-to-read Color Touch Panel Display right at the printer to make sure your jobs are correct and ready to print.

Flat-out fast.

Speed and reliability are the main concerns in a production environment. And Savin 8090/8110/8135 systems more than meet the challenge—not just in output capability but in virtually everything they do.

- The fastest MFPs ever produced by Savin. Savin 8090/8110/8135 systems are engineered to virtually eliminate the gaps between sheets during feeding. This not only boosts top-end output speeds significantly, but also contributes to higher reliability. The result: faster turn-around times, fewer projects outsourced to external vendors and overall higher productivity.

- Faster finishing. Create professional-looking finished documents with Savin's robust array of in-line finishing systems at speeds up to 135-ppm.
- Faster, easier last-second changes. Spend less time running back and forth from the printer to your desk to your scanned documents. Now you can edit your work right at the MFP, quickly and easily, in a variety of ways—such as mixing one- and two-sided originals, incorporating Bates numbering and adjusting for page creep.
- Faster high-quality copying. Copy at high resolutions and fast production speeds with a limitless paper supply and access all the standard and optional functions you need to get desired results.

Productivity you can count on.

It's not enough for a production MFP to be fast. It needs to be reliable, day in and day out. The Savin 8090/8110/8135 systems were designed with that in mind.

- Keep interruptions to a minimum.

A multi-feed detection system senses when there is more than one sheet fed—and automatically removes it from the paper path before it can cause trouble.

- Eliminate errors.

With Savin 8090/8110/8135 systems, you can preview your scanned documents in thumbnail format before you output or send them to e-mail, so you can be sure you're printing or sending exactly what you want.

- Cut labor costs.

Time-saving features include on-line punching with the new GBC Stream-Punch™ III, which can cut labor in half for producing bound books.

- Automate and streamline workflow.

Savin's PrintStation 0135R MicroPress connectivity combines advanced job management, robust make-ready capabilities and sophisticated job management to automate and streamline digital workflow in critical production print environments.

Configure the system you want to get the results you want.

- Savin 8090/8110/8135 systems are the only multifunctional systems in their class to scan both black & white and color images—at exceptionally high speeds. This reduces time spent at the MFP and ensures that your output matches your input, since the majority of an organization's most important documents are often in color.

- The broad selection of finishing and output options mean you can finish your documents exactly the way you want without having to resort to expensive outside vendors.

Produce:

- Saddle stitched booklets.
- Z-folded documents.

- Duplex prints and copies.
- Preprinted inserts or covers that you can add with the dual-tray interposer, which allows you to feed stock without sending it through the fuser.
- Thick stapled documents, finished at high speed through the 100-sheet stapler and 3,000-sheet finisher.
- Produce large-volume booklets (with optional large capacity 13" x 18" tray); and only Savin 8090/8100/8135 systems feature a Book Fold option combined with the new BK5010 Production Booklet Maker.
- Create custom applications for operating, printing, saving files and scanning, so you can dramatically enhance your organization's workflow with Embedded Software Architecture—an innovative Java-based software development platform.
- Print on a wide range of media and weights with the Universal Paper Tray Design.

Security at every point of contact.



To help ensure the complete security of your documents, Savin 8090/8110/8135 systems feature a host of sophisticated security measures, including the DataOverwriteSecurity System (DOSS). This feature automatically overwrites latent information on the hard drive after every copy, print and scan job. The

technology is so effective it conforms to U.S. National Security Agency standards for securing digital system hard drives. In addition, new network/user authentication provides full control and management across your entire organization.



Trained Customer Replacement Unit (TCRU) ensures minimum interruptions in specific production workflow environments with a range of basic components designed to be changed easily by your dedicated operators.

8090/8110/8135 Multifunction Systems

FAST > RELIABLE > CONFIGURE > EFFICIENT > SUCCESS >



Simple design, easy operation.

Easy operation means less time spent in front of the MFP... and more time doing productive work for your organization. As fast and productive as they are, Savin 8090/8110/8135 systems are designed for operational simplicity at the most critical points of contact with users and administrators.

- Color screens allow users to see and navigate more clearly. And to help set up your most complicated jobs faster and easier, the Super VGA Color Touch Panel Display with large, easy-to-read color graphics allows you to preview your copy and scan jobs right at the device, helping avoid errors before they go to print.
- Savin 8090/8110/8135 systems can also be equipped with solutions tailored specifically to your needs.
 - WebImageMonitor allows you to remotely monitor the various device functions, check toner and paper levels, change print queues, merge jobs, receive e-mail error notifications, and much more.
 - The optional @Remote Intelligent Remote Management System automatically reports meter data, freeing you to focus on getting your work out, instead of worrying about collecting and reporting the machine's usage.

Your Environmental Partner

These systems are ENERGY STAR® compliant, continuing our long-standing commitment to developing office solutions with superior energy and supply-saving features, including:

- Quick Start-Up (QSU) Technology
- Power-saving Sleep Modes
- Duplex Mode
- Toner Recycling
- Low Noise Levels
- Minimal Ozone Emissions
- Restriction of Hazardous Materials (ROHS)



GBC Streampunch III

On-line punch unit with customer replaceable die sets that's now fully integrated with the MFP. Activate from either the Touch Panel Display or straight from the Print Driver.

CI5000 Cover Interposer

The Interposer makes it easy to insert color pre-printed documents into your jobs. Each of the Interposer's two sources boasts a 200-sheet capacity with a maximum paper size up to 13" x 18".

Color Touch Panel Display

A new easy-to-use Color Touch Panel Display helps you program jobs quickly, especially for walk-up users.

New RT5010 DLT/LCT Large Capacity Tray

Provides a choice of Large Capacity Trays for feeding all types and sizes of documents, including up to 13" x 18" sized paper. Universally designed paper trays support the same sizes and weights (16 lb. Bond – 80 lb. Cover) across the entire system.

High-Speed Color Scanner

Scan your documents in black and white or color, all at exceptional speeds.



SR5000 Finisher

Staples up to 100 sheets in multiple different positions and now supports finishing paper sizes up to 13" x 18".

BK5000 Saddle Stitch Unit

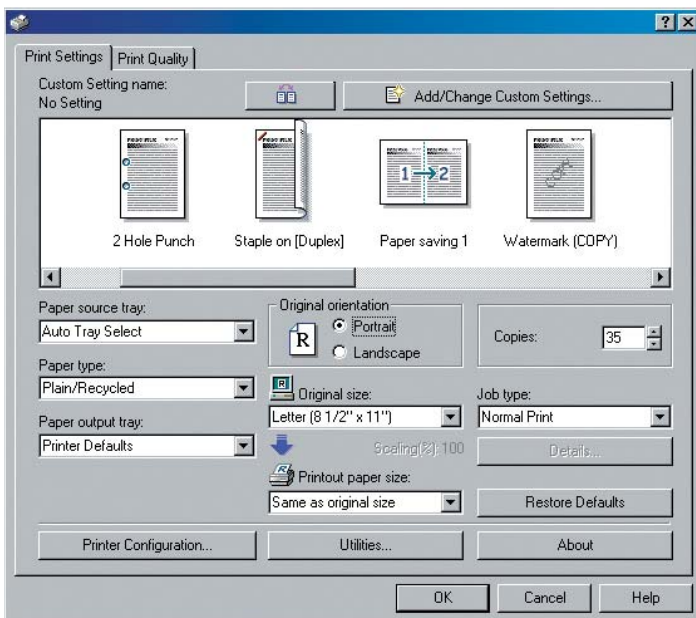
New finishing technology enables you to create saddle-stitched booklets at the rated speed of the MFP.

ZF4000 Z-Fold Unit

Integrated feature that provides the ability to have larger sheets of paper Z-Folded on-line into your presentations. Engineering specifications and schematics are just some of the applications that are perfect for the new ZF4000.

Base System

New 90-ppm
New 110-ppm
New 135-ppm



Refined Print Command Stream (RPCS).

With its unique, icon-based page description language, Savin's Refined Print Command Stream (RPCS) driver greatly simplifies printing and set-up.

GENERAL SPECIFICATIONS

Warm-up Time	Less than 360 seconds
Standard Paper Weights	16 lb. - 40 lb. Bond 50 lb. - 80 lb. Cover 90 lb. - 110 lb. Index
Standard Paper Capacity	Tray 1: 1,000 sheets x 2 Tray 2: 500 sheets Tray 3: 500 sheets
Standard Paper Capacity	3,000 sheets
Power Source	208 - 240V, 50/60Hz, 20A (Requires Dedicated Outlet)
Power Consumption	Savin 8090/8110: Less than 3,500W with LCT & Finisher Savin 8135: Less than 4,000W with LCT & Finisher
Dimensions (W x D x H)	34.3" x 33.9" x 58.2" (Main unit without a Finisher)
Weight	672.4 lbs. (Main unit without a Finisher)

SYSTEM SPECIFICATIONS

First Copy	Savin 8090: 3.5 seconds Savin 8110: 3.2 seconds Savin 8135: 3.0 seconds
Copy Size	5.5" x 8.5" to 13" x 18"
HDD Capacity	160GB x 2 (360GB)
Reduction/Enlargement	25% - 400% in 1% increments

SYSTEM ACCESSORIES

Automatic Reversing Document Feeder

Original Paper Weight	11 - 34 lb. Bond (Simplex) 14 - 28 lb. Bond (Duplex)
-----------------------	---

RT5000 LT/LCT Large Capacity Tray

Paper Sizes Supported	5.5" x 8.5" - 8.5" x 11"
Paper Capacity	Tray 4: 1,000 sheets Tray 5: 1,000 sheets Tray 6: 2,550 sheets
Paper Weights	Tray 4: 16 lb. Bond - 80 lb. Cover Tray 5: 16 lb. Bond - 80 lb. Cover Tray 6: 16 lb. Bond - 90 lb. Index
Dimensions (W x D x H)	21.2" x 28.7" x 38.5"
Weight	194 lbs.

RT5010 DLT/LCT Large Capacity Tray

Paper Sizes Supported	5.5" x 8.5" - 13" x 18"
Paper Capacity	Tray 4: 1,000 sheets Tray 5: 2,000 sheets Tray 6: 1,000 sheets
Paper Weights	Tray 4: 16 lb. Bond - 80 lb. Cover Tray 5: 16 lb. Bond - 80 lb. Cover Tray 6: 16 lb. Bond - 80 lb. Cover
Dimensions (W x D x H)	34.7" x 28.8" x 38.6"
Weight	194 lbs.

SR5000 100-Sheet Finisher

Proof Tray	500 sheets (8.5" x 11") 250 sheets (8.5" x 14" or larger)
Paper Weight	16 lb. Bond - 80 lb. Cover
Proof/Shift	3,000 sheets (8.5" x 11" - LEF)
Shift Tray	1,500 sheets (8.5" x 14" - 11" x 17" SEF) 1,000 sheets (12" x 18")
Staple Capacity	100 sheets (8.5" x 11")
Dimensions (W x D x H)	31.5" x 28.7" x 38.5"
Weight	165 lbs.

SYSTEM ACCESSORIES (cont.)

BK5000 Saddle Stitch Unit

Paper Sizes Folded	8.5" x 11" - 12" x 18"
Paper Weights Folded	20 lb. - 24 lb. Bond
Dimensions (W x D x H)	23.6" x 28.7" x 38.5"
Weight	154 lbs.

CI5000 Cover Interposer

Weight	99.2 lbs.
Paper Sizes Supported	5.5" x 8.5" - 13" x 18"
Paper Capacity	2 x 200 sheets
Paper Weight	17 lb. Bond - 80 lb. Cover
Dimensions (W x D x H)	27.9" x 28.7" x 50"
Weight	99.2 lbs.

BY5000 Multi Bypass Tray

Paper Capacity	500 sheets (20 lb. Bond)
Paper Sizes Supported	5.5" x 8.5" - 12" x 18" (RT5000) 5.5" x 8.5" - 13" x 18" (RT5010)

PU5000 Punch Unit

Punch Type	2 or 3 holes (User Selectable)
Punch	16 lb. Bond - 90 lb. Index
Systems Supported	Savin 8090/8110 only

GBC StreamPunch III

Punch Type	Customer Replaceable Die Sets (7)
Paper Sizes Supported	8.5" x 11" Long Edge Feed (11" side only)
Systems Supported	Savin 8090/8110/8135
Dimensions (W x D x H)	12" x 28.5" x 38.5"
Weight	154 lbs.

NETWORK CONNECTIVITY OPTIONS

Printer/Scanner Kit Type 1350

Windows Drivers	RPCS 95/98/ME/NT4.0/2000/XP/Server 2003 PCL5e 95/98/ME/NT4.0/2000/XP/Server 2003 PCL 6 95/98/ME/NT4.0/2000/XP/Server 2003 Adobe PostScript3 (option) 95/98/ME/NT4.0/2000/XP/Server 2003
Utilities Supported	WebImageMonitor Web SmartDeviceMonitor SmartDeviceMonitor Printer Utility for Mac IEEE1394 Utility USB Printing Support PDF Direct Printing (through DeskTopBinder) DeskTopBinder/DeskTopBinder Lite ScanRouter/ScanRouter Lite IEEE1284 Interface Type A IEEE1394 Interface Type B IEEE802.11b Wireless Interface Type H Gigabit Ethernet Type 7300 Bluetooth Interface Unit Type 3245
Printer Options	Document Output Technologies (DOT) RA2K Integration for IPDS OMS400
Host Printing Options	

SCANNER SPECIFICATIONS

Scan Speed	80 spm (black and white) 80 spm (color)
Optical Resolution	100/150/200/300/400/600 dpi
Resolution for Delivery Scanner	100/150/200/300/400/600 dpi
TWAIN Resolution	100 - 1200 dpi (color and black and white)
File Formats	TIFF/JPEG/PDF and High Compression PDF
Scan-to-Email	
Requirement	SMTP Gateway and TCP/IP
Email Addresses	2,000 addresses
Max Address Per Send	500 addresses
Address Support Via LDAP	100 addresses
Scan-to-Folder	
Protocol Support	SMB/FTP/NCP
Resolution	100/150/200/300/400/600 dpi
Max. Client Folders Per Send	50 Client Folders
File Types Supported	Single Page TIFF/JPEG Single Page PDF Multi Page TIFF Multi Page PDF High Compression PDF
Security	
Authentication	Windows Authentication LDAP Authentication Basic Authentication
Secure Socket Layer Support	
Network Protocol On/Off	
SNMP v3 Support	
PDF Encryption	
Driver Encryption Key (PCL/RPCS Driver)	
Copy Data Security System Type E	
Data Overwrite Security Unit (DOSS) Type F	

ADDITIONAL OPTIONS

BK5010 Production Booklet Maker
TR5010 Trimmer Unit
CF5010 Cover Feeder Unit
BF5010 Book Folder
Fiery EB-135 Print Controller
PrintStation 0135R MicroPress Connectivity

